



Tough Panel™

Fanless Windows 7 Embedded PC



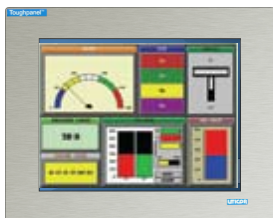
Many companies offer embedded PCs; however, the industrial user still faces the following challenges:

Products are not "industrial" enough & do not last long in industrial environments, such as high temperature, high humidity, oil & coolant mists, hosedowns for machine wash, high shock & vibration. And when a component fails, it takes a long time to replace it, causing a loss of machine productivity.

Most companies do not offer ready-to-use products, requiring customers to spend a day or two to install necessary software. Should incompatibilities or driver issues come up, this time could extend to weeks.

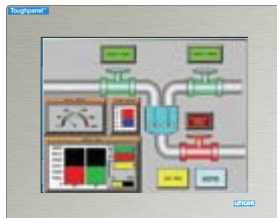
- **Pre-Configured, Ready to Use (with Soft HMI)**
- **Compact Design**

Enjoy All the Benefits of the Windows World in an Industrial Package



View Video

View video file in MPEG format



View PowerPoint

Visually learn and train



View Excel

View and analyze current data



Drivers

All regular Windows drivers Supported



UTW-10TC-0-A-0-0

\$3495

10" Windows 7 PC w/
Aluminum Bezel

UTW-15TC-0-A-0-0

\$5095

15" Windows 7 PC w/
Aluminum Bezel

Choose from an Aluminum or Stainless Steel Bezel!

- Includes Power Touch Soft HMI
- 4GB SSD
- 16.2 M colors
- LED Backlight
- NEMA 4,4x
- Micro SD slot
- 1024x768 pixel resolution
- Option cards capable: DH+/Remote IO, Modbus+, Devicenet, Profibus, CC Link
- All Serial and Ethernet Protocols included

UTICOR

Phone 1-800-711-5109 • www.uticor.net

Resolution 1024x768**Windows 7 Embedded
Operating System****4 USB ports. Connect
printers, scanners &
any other peripherals****Panel Mount
10" & 15" Option****1GB Ethernet port****Expandable Memory
Micro SD Card****Capability for Network
option boards DH+/RIO,
Modbus+, DeviceNet, Profibus****LED Backlight 400 nits**

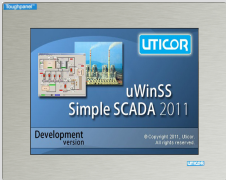

Technical Data

Processor:	Intel Atom E640 1 GHz with 1GB DDR2 RAM
Memory:	SSD 4GB (8GB, 16GB, 32 GB options available)
Display:	15" TFT Color with built-in Anti-Glare, 400 Nits, LED Back light
Backlight Life:	75000 Hrs @55°C
Resolution:	1024 x 768
Colors:	16.2M Colors
Touch Screen:	4/5-Wire Analog Resistive
USB:	4 USB ports with USB 2.0
Ethernet:	1 Ethernet port with 1GB Speed
Serial Ports:	2 Ports - 1 9-Pin Rs232 Port, 1 15-Pin Rs232/422/485
CAN Port:	1 Optional
Storage:	MicroSD slot available
Operating Temp:	0-55° C
Supply:	12V-28V DC Supply Voltage
Panel Protection:	NEMA 4/4X

**No moving
parts!****Industrial Grade
NEMA 4/4X**



Uticor Tough panel 10 and 15-inch Model Specifications

Part Number	Windows 7 OS with Ethernet and option cards	
	UTW-10TC-0-A-0-0 \$3395 UTW-15TC-0-A-0-0 \$4995	UTW-10TC-0-S-0-0 \$3995 UTW-15TC-0-S-0-0 \$5795
		
Specification	10.4" TFT Color	15" TFT Color
Enclosure	NEMA 4/4X, Class I, Div. II with FDA Compliance, Aluminum or Stainless Steel	
Display View Area	8.31" x 6.22" (211.07 x 158 mm)	12.02" x 9.01" (305.28 x 228.96 mm)
Screen Pixels	800x600	1024x768
Brightness (Nits)	400	400
Life (Hours)	100,000	100,000
Touch Screen	Analog Resistive Touch Screen	
CPU Type	Intel Atom E640 1 GHz w/1GB DDR2 RAM	
Power Supply Required	12V-28V DC Supply Voltage	
Power @ 24 VDC (watts)	20 Watts	20 Watts
Approvals	UL, CUL, CE (Pending)	
Operating Temp.	-20° to 60° C (-4 to 140° F)	
Storage Temp.	-20° to 60° C (-4 to 140° F)	
Humidity	10-95% RH, relative humidity	
Electrical Noise	NEMA ICS 2-230 showering arc ANSI C37.90a-1974 SWC Level C Chattering Relay Test	
Withstand Voltage	1000VDC (1 minute), between power supply input terminal and protective ground (FG)	
Insulation Res.	Over 20 MΩ, between power supply input and terminal and protective ground (FG)	
Vibration	5 to 55Hz 3G for 2 hours in the X, Y and Z axes	
Shock	20G for under 12ms in the X, Y and Z axes	
User Memory – System RAM	1GB DDR RAM	
User Memory	4GB SSD and Micro SD Available	
Num. of Screens	Up to 999 limited by memory	
Serial Communications	PLC port: RS-232/RS-422/RS-485 15-pin D-sub (female)	
	Download/program port: RS-232/RS-422/RS-485 9-pin D-sub (female)	
	Ethernet and USB Built-in	
Weight	6.8 lbs for Aluminum, 9 lbs for Stainless Steel	8.9 lbs for Aluminum, 11.9 lbs for Stainless Steel